

Plastifloor® 540/H Cove Paste (USA)

Universally deployable cove paste for production of coves

PLASTI CHEMIE
Produktionsgesellschaft mbH

Application: Plastifloor® 540/H cove paste is suitable for installing coves in mixture with natural quartz sand or coloured quartz sand for seamless wall connections on Plastifloor® industrial floors. As far as a mechanical separation to the wall is required, we recommend the installation of our cove profile system.

Characteristics: Plastifloor® 540/H cove paste is easily processed and cures with low yellowing. When applied together with Plastifloor® 332 the elasticity /flexibility of the coves can be individually adjusted.

Characteristic data:

Delivery form:	pasty, dull, purple
Curing time:	ca. 25 min (68°F)
Storage:	dark at < 68 °F, 6 months maximum
Bundle:	10 kg, 20 kg pail

Initiator/Hardener: Hardening powder 50W (BPO), depending on temperature

Formulations:

1	PBW	Plastifloor® 540/H
2 - 3	PBW	coloured sand 10-40 mesh (depending on colour)**
1-4 Vol. %	see table	Plastifloor Hardener powder 50w

* Due to pigmentation of the coloured quartz the amount required may vary, on your first mix start with 5.5 lb of coloured quartz, increase as necessary, up to 6.6 lb (maximum) to ensure correct consistency

Preparation: With a fast running mixer, cove paste Plastifloor® 540/H and hardener powder 50W are being mixed and then stirred with filler sand. After 1 minute mixing time, the cove paste is being laid with specially rounded trowels onto the wall mounting surface that has been primed with Plastifloor® 112. For the mechanical separation between wall and floor, use AL + V4A cove profiles if required. See product data sheet AL cove profile system. Coating can only be continued after entire hardening of the precedent layer.

1. Prime surface with suitable Plastifloor® primer at 14 oz per sqm, if applying onto stainless steel profile, use Plastifloor 332 as primer.

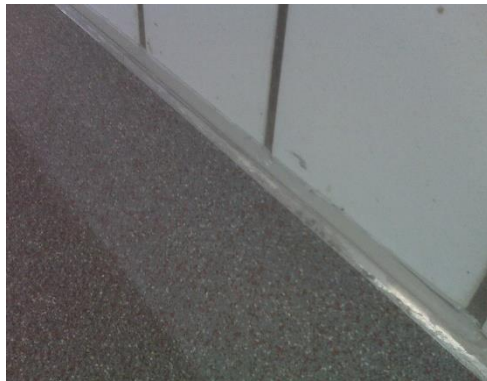
Plastifloor® 540/H Cove Paste (USA)

Universally deployable cove paste for production of coves

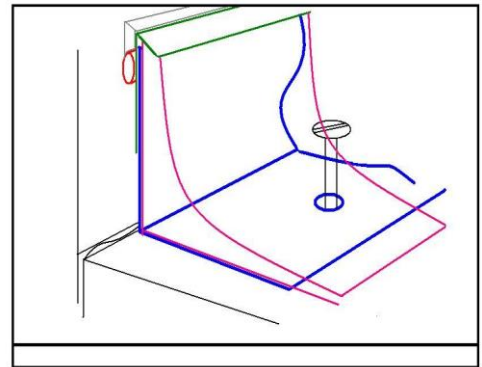
PLASTI CHEMIE
Produktionsgesellschaft mbH

2. Lightly scatter with size 7 quartz.
3. In a bucket: add 2.2 lb of 540/H coving paste.
4. Add hardener powder 50W as stated in the table above for installation temperature. Mix thoroughly for at least 1 minute with a high-speed drill.
5. Add 4.4 – 6.6 lbs coloured quartz 10-40 mesh, mix thoroughly.
6. Immediately apply to floor/cove edge using specialist-coving tool, do not work from the bucket, empty entire material along cove edge. The coving mix must be compacted well.
7. Do not allow SOLVENT to come into direct contact with Plastifloor® coving mix, always wipe down tools prior to reapplying to cove. Allow to fully cure.
8. Apply seal coat to match floor finish.

Details:



Completed cove with profile



Detail view

Hardener dosage: The required amount of hardener powder in relation to resin and 540/H corresponds to our recommended dosage for Plastifloor® resins. According to the application amount, 1-4 Vol. % hardener 50W are being used.

Temperature [°F] **)	Hardener [Vol.- %] **)	Pot life [min.]	Curing time [min.]
41	4.0	~ 30	~ 50
+50	3.0	~ 20	~ 45
+68	2.0	~ 12	~ 25
+86	1.0	~ 10	~ 15

**) Hardener quantity according to quantity of Plastifloor® 540/H (hardener 50W)
The temperature specifications refer to resin, soil and air temperature

Consumption: 66.14 lb Plastifloor® 540/H add up to approx. 109 yd cove (height approx. 2 in.).

Plastifloor® 540/H Cove Paste (USA)

Universally deployable cove paste for
production of coves

PLASTI CHEMIE
Produktionsgesellschaft mbH

-
- Storage:** Methacrylate resins are subject to the handling regulations of flammable substances. Plastifloor resins are to be stored cool, protected from direct sunlight and at temperatures from 59° to 68°F. During storage paraffin particles may be deposited. Thus containers have to be agitated well before application. Pay attention to our advice on the safety data sheets.
- Processing:** Pay attention to the directions given by the States Committee for Occupational Safety and Health while processing MMA resins!
- Industrial safety:** Ensure sufficient ventilation during work. On processing, pay attention to the directives in the hazardous substances ordinance and to the indications of the Federal States Committee for industrial safety and safety engineering (LASI) as well as to our safety data sheets.
- VbF:** A I
- GISCODE:** RMA 10
- Taxnumber:** 3208 2010

data concerning our products and devices as well as concerning our data and procedures are based on an extensive research work and an application technology experience. We obtain these results, with which we do not take over adhesion going beyond the respective single contract, in word and writing after best knowledge, reserve ourselves we however technical changes in the course of the product development. Beyond that our application technology service stands when desired for large consultation as well as for co-operation with the solution manufacturing and application technology problems for order. That does not relieve the user however to examine our data and recommendations before their use responsible for the own use. That applies - particularly for deliveries to foreign markets - also regarding the keeping of patent rights third as well as for applications and procedures, which are not expressly in writing indicated by us. The case of loss our adhesion is limited to indemnifications of same extent, as they plan our general terms of delivery and sales with lack of quality.